

UNIWIGS

Find Your Dream Hair

Contact Us

If you have any questions at all we're always happy to help:

Email: support@uniwigs.com

833-902-4156

Don't forget to join our social community here:



UNIWIGS



Compassionate
Individualistic
Fashionable

"To constantly evolve and deliver care to our customers, so that everyone can achieve the hair of their desires."

CONTENTS

03	About UniWigs
05	Brand Development
07	Product Series
07	<i>Human Hair Wigs</i>
09	The Colorist Collection
11	The Topcomfort Collection
15	The Glueless Collection
19	The Medical Wigs Collection
23	<i>Synthetic Wigs</i>
23	Everyday Elegance Wigs
27	Colored Glamour Wigs
29	Personalized Solutions
33	UniWigs Offline Networks
37	UniWigs Charities
9	Our Customers Say



ABOUT UNIWIGS

UniWigs is a leading hair topper and wig brand since 2012, helping people feel confident and beautiful with our exquisite collection of hair solutions. We offer a variety of options in various colors, styles, and lengths, with customization services to cater to each customer's unique preference. Experience the ultimate hair transformation with UniWigs!

UniWigs: Your Dream Hair Destination

Q: What sets UniWigs apart as a leading hair destination?

A: UniWigs takes pride in being the ultimate destination for all your hair needs. Whether you seek solutions for hair loss or desire fashionable hair products, we make your dream hair a reality.

Q: What materials are used?

A: Our human hair pieces are handcrafted using 100% real human hair, ensuring a natural, flawless look. Our synthetic hair pieces boast high-quality fibers that mimic real hair with remarkable realism.

Q: Can I get expert assistance in selecting my dream hair?

A: Our friendly and knowledgeable customer support team is here to assist you throughout your UniWigs journey. Reach out to us via email, live chat, phone, or virtual consultation, and we'll help you find your dream hair.

Q: Does UniWigs offer international shipping?

A: Yes, we are proud to offer international shipping to most countries and areas worldwide.

Q: Does UniWigs have offline stores?

A: Currently, we don't have physical stores, but we have successfully hosted several pop-up events in various cities. Moving forward, we will continue to explore opportunities for more pop-up events and look forward to meeting you face to face one day!



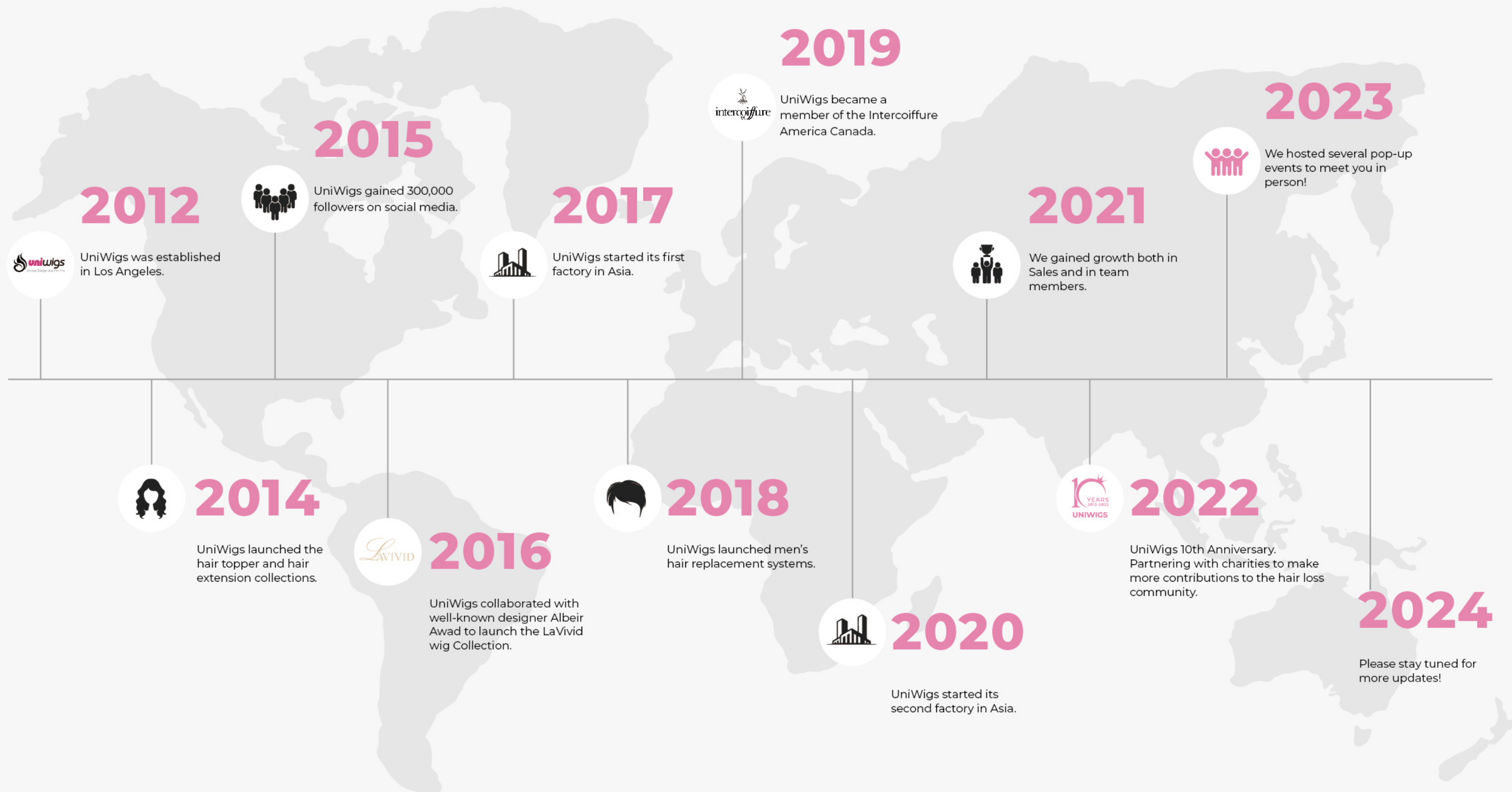
OUR MISSION

"To constantly evolve and deliver care to our customers, so that everyone can achieve the hair of their desires"

WHY UNIWIGS

- Customer First
- Fashion Conscious Designs
- One Stop Service
- Customization Service
- Worldwide Shipping
- Hassle Free Return Policy

BRAND DEVELOPMENT



PRODUCT SERIES

HUMAN HAIR WIGS

UniWigs Human Hair Wigs are made with high-quality human hair for a natural look and feel. Whether you are experiencing hair loss or you just want a glamorous new look, you' ll discover your dream hair here.



THE COLORIST COLLECTION

UNIWIGS X COLORISTS

Introducing our Colorist Line, a celebration of the artistry of our top US & Canadian colorists. Each hue is meticulously hand-dyed, transforming every UniWigs piece into a masterpiece and allowing wearers to express their individual style with unparalleled uniqueness.

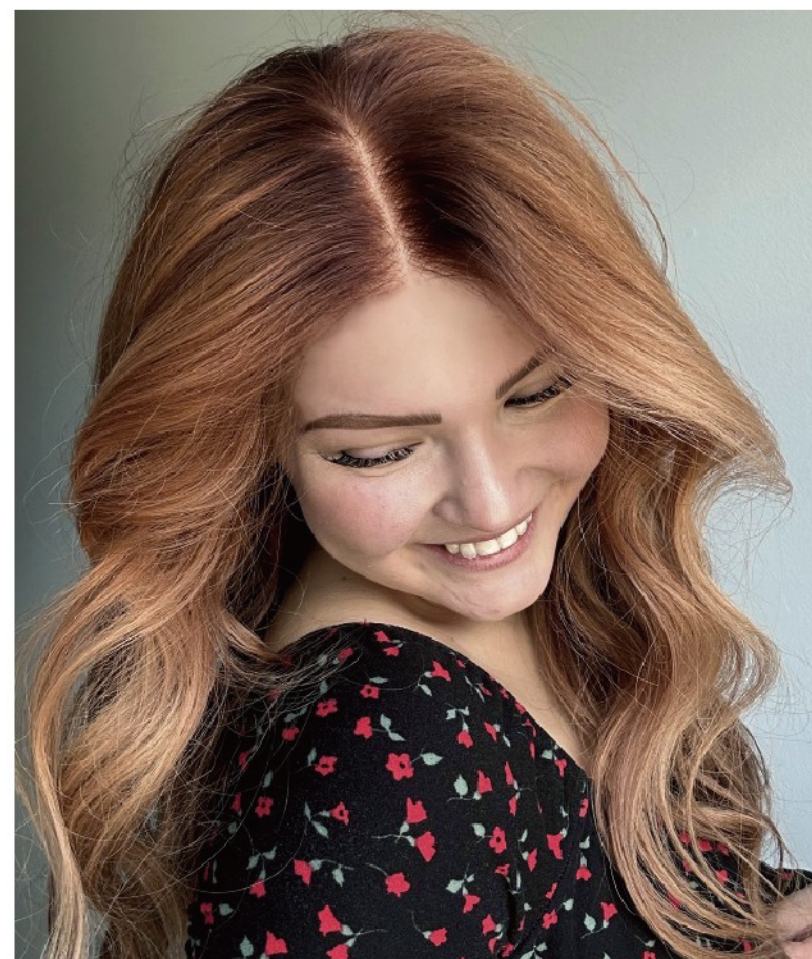
09
PRODUCT SERIES



Ellery - CL2406



Auden - CL2327



Autumn - CL2336



Dana - CL2405



Jane - CL2312



THE TOPCOMFORT COLLECTION

UNIWIGS EXCLUSIVE

Introducing TopComfort Wigs, where luxury meets sensitivity. Our exclusive plush inner cap, crafted from UniWigs' unique ice milk cotton, offers an unmatched experience for those with sensitive scalps. Say goodbye to discomfort and hello to blissful wear – without the need for a wig cap.



LEAH

HL2315

Elevate your style with the "Leah" Medium Brown Human Hair Lace Front Wig. Its lifelike, medium brown warm tones and lace front design create a seamless, natural look. The TopComfort Cap ensures all-day secure and comfortable wear. Embrace elegance and confidence with this wig, perfect for any occasion.

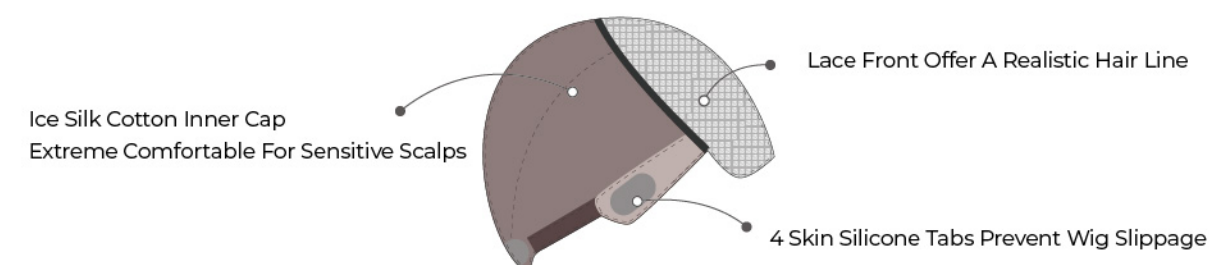


Natural Appearance - Lifelike medium brown tones and lace front design for a seamless, authentic look.

TopComfort Cap - Ensures secure and comfortable all-day wear, eliminating irritation.

Versatile Style - Elevate your elegance for any occasion, from everyday to special events.

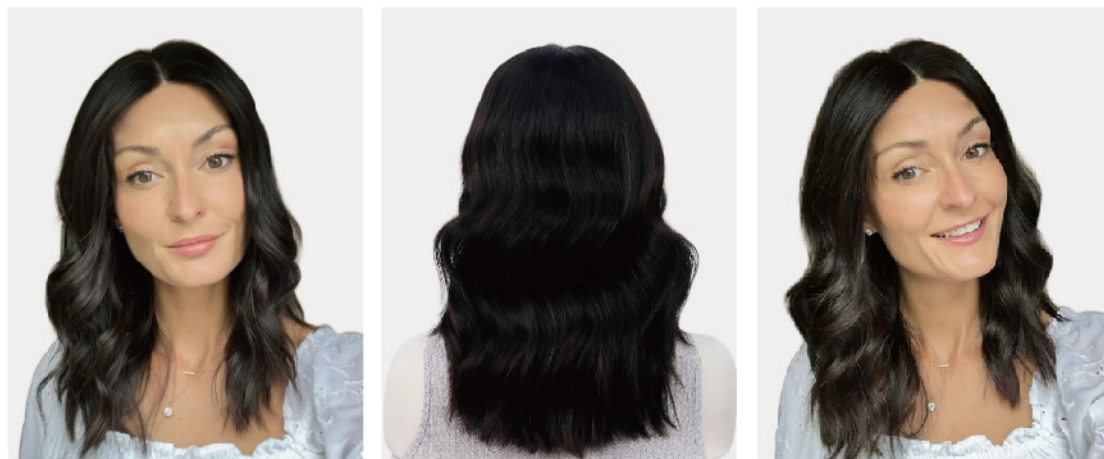
Human Hair Quality - Crafted with 100% remy human hair, exuding confidence and beauty.



JADE

HL2314

Introducing our exquisite Jade Remy Human Hair Lace Top Wig, a true gem for those seeking unparalleled beauty and versatility. Crafted with utmost care and precision, this wig features a low density of 110%, offering a natural and effortlessly glamorous look. Fall in love with its exceptional quality and revel in the luxurious feel of genuine human hair.

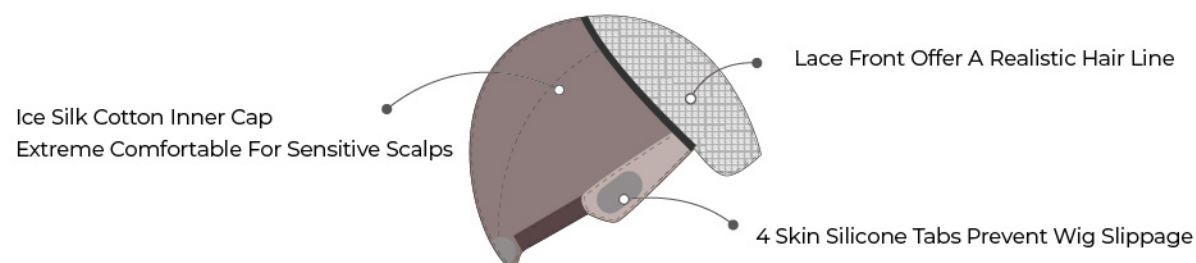


Natural Appearance - Lifelike medium brown tones and lace front design for a seamless, authentic look.

TopComfort Cap - Ensures secure and comfortable all-day wear, eliminating irritation.

Versatile Style - Elevate your elegance for any occasion, from everyday to special events.

Human Hair Quality - Crafted with 100% remy human hair, exuding confidence and beauty.



KIM

HL2313

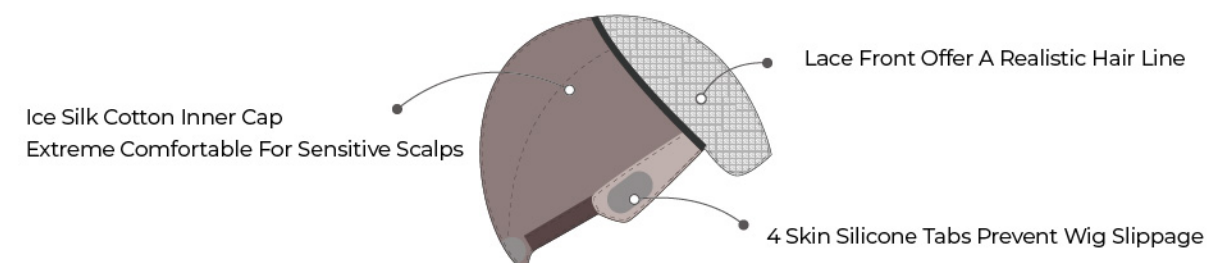
Kim is a specially designed wig for individuals experiencing complete hair loss, such as alopecia. The new skin silicone grip tabs provide a gentle grip to the scalp. Kim showcases a flawlessly pre-cut bob style with longer 12-inch pieces in the front and shorter 9-inch pieces in the back. Its breathtaking color is a creamy blonde with natural ashy mouse-colored roots. Kim offers both comfort and style, instilling confidence in those who wear it.



Cap Construction - The 5" x 5" hand-tied lace top with machine-made wefted back with the soft ice silk cotton material attached.

Ultra Comfort - The ice silk cotton inner cap eliminates the need for a wig cap, making it perfect for sensitive scalps. 4 Skin Silicone tabs strategically placed around the cap perimeter, these skin silicone tabs prevent wig slippage, serving as an alternative to clips and combs.

100% Remy Human Hair - Kim is made from high-quality remy human hair, allowing for styling with straighteners, curling irons, and blow dryers.





THE GLUELESS COLLECTION

SHAKE AND GO

Step into a world of hassle-free elegance with UniWigs Glueless Wigs collection. True to their name, our wigs revolutionize convenience, eliminating the need for messy adhesives. Simply put on the wig and go – it's that easy!



MAYLENE

LS2327

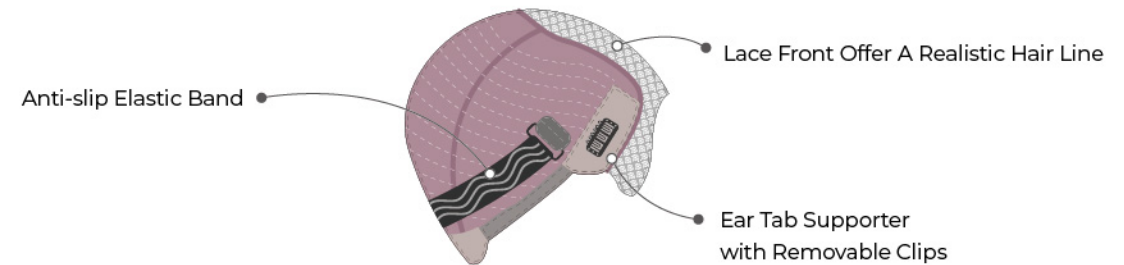
Maylene is a Blonde Balayage Remy Human Hair Lace Front Wig, crafted with precision to deliver a seamless blend of style and comfort. Designed with your convenience in mind, this wig features adjustable straps, an anti-slip elastic band, ear tab supporters, and strategically placed combs and clips, ensuring a secure fit without the need for glue as long as the wig size is right.



Blonde Balayage Brilliance - Maylene boasts a beautiful blonde balayage, adding a touch of glamour and sophistication to your everyday look.

UniWigs Glueless Collection - Experience the freedom of a glue-free application with Maylene's advanced design, featuring adjustable straps, ear tab supporters, and carefully positioned combs and clips.

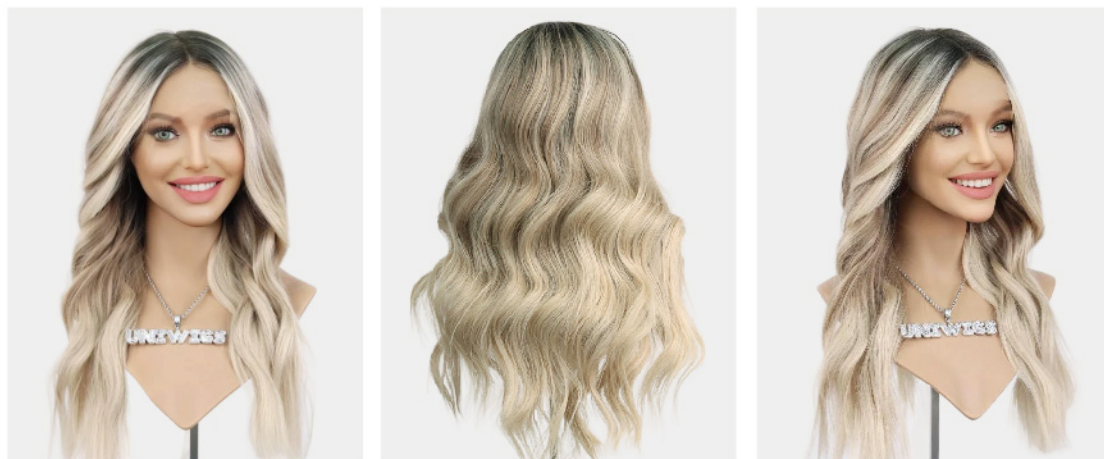
Lace Front Elegance - The lace front seamlessly blends with your natural hairline, offering a realistic and undetectable finish, enhancing Maylene's overall allure.



CHARLOTTE

CL1902

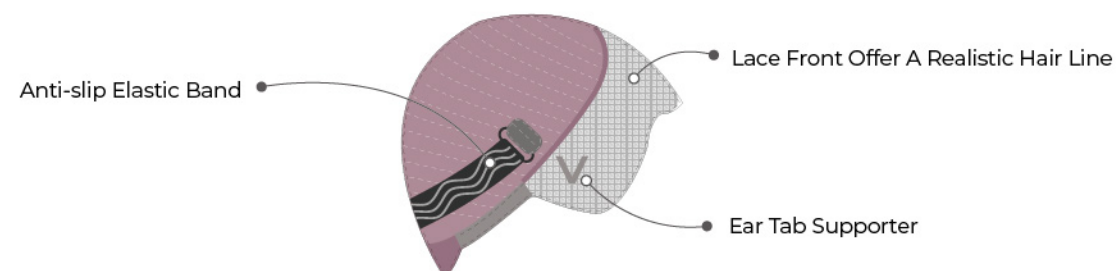
Charlotte is a flattering lace style made entirely from remy human hair, featuring a natural straight hair texture. Its unique salon-quality color, Champagne Lux, combines a sophisticated balayage blend of Ice Blonde and Beige Blonde with natural dark roots, resembling growing hair. The superior French lace top provides a natural hairline that seamlessly blends into the skin and allows for free parting.



Salon Color - 601R - Champagne Lux boasts salon-quality blonde balayage coloring with dark rooting for added dimension.

13" x 5" Front Lace - The generous lace front offers a natural hairline and allows for free parting, whether you prefer a middle or side part.

Superior French Lace - The superior French lace used in this wig is both strong and soft. The knots in the lace are small, creating a natural appearance of hair growing from the scalp.



DOROTHY

HL2212

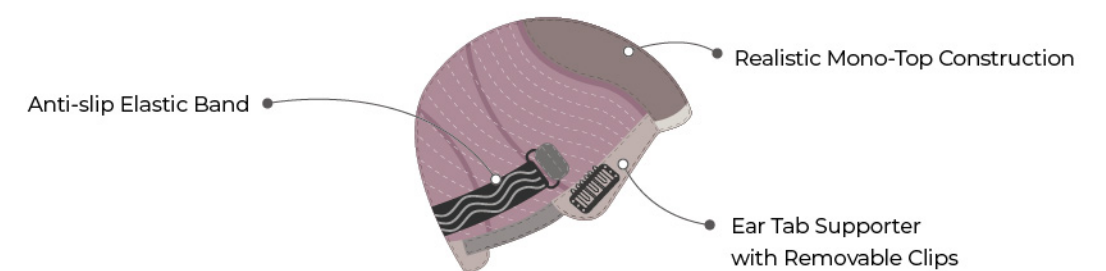
Gorgeous, silky, and incredibly comfortable, this beautiful espresso brown human hair mono top wig makes you look amazing. The hand-tied mono-top cap construction gives a natural scalp enhancement appearance with any part style, as well as a realistic part line for any occasion!



Premium Remy Human Hair - Made from high-quality Remy human hair, the Dorothy Truffle Brown wig offers a luxurious and natural look that mimics real hair.

Realistic Mono-Top Construction - Featuring a mono-top construction, this wig provides a realistic scalp appearance, allowing for versatile parting and styling options.

Easy to Style - With the ability to be heat-styled and customized according to your desired look, the Dorothy Truffle Brown wig offers endless styling possibilities for a personalized and fashionable appearance.





THE MEDICAL WIGS COLLECTION

FULLY HAND-TIED WIGS

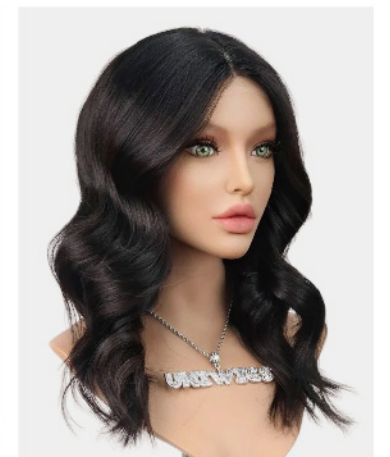
Introducing UniWigs Medical Wigs, meticulously crafted to cater to the unique needs of individuals facing hair loss due to medical treatments or conditions such as chemotherapy, alopecia, trichotillomania, and more.



PEARL

LS2327

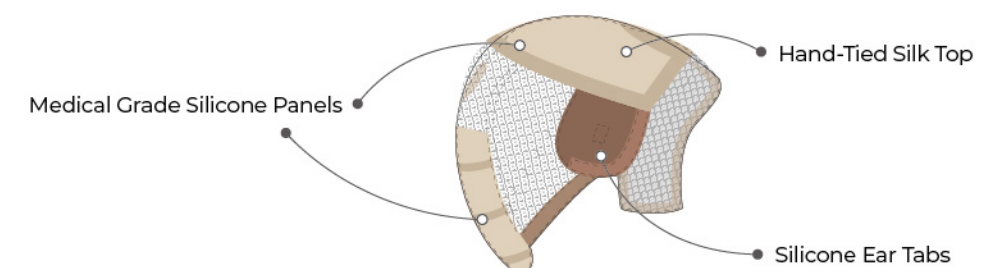
Pearl was made specifically for people who have total or partial hair loss (like alopecia) in mind. The cap is fully handmade to be breathable and soft, perfect for sensitive scalps. It has medical grade silicone panels throughout the front back and sides for a secure hold without any adhesive needed whatsoever. She has a lace front and a silk top that has a realistic hairline. She is fully hand-tied, so you can wear her up to a high ponytail and part hair anywhere.



Hand-Tied Silk Top - No dark knots and return hair, providing a an ultra-realistic look as if it's your own hair growing from your scalp.

Silicone Ear Tabs - Medical grade silicone ear tabs are constructed for an added secure fit.

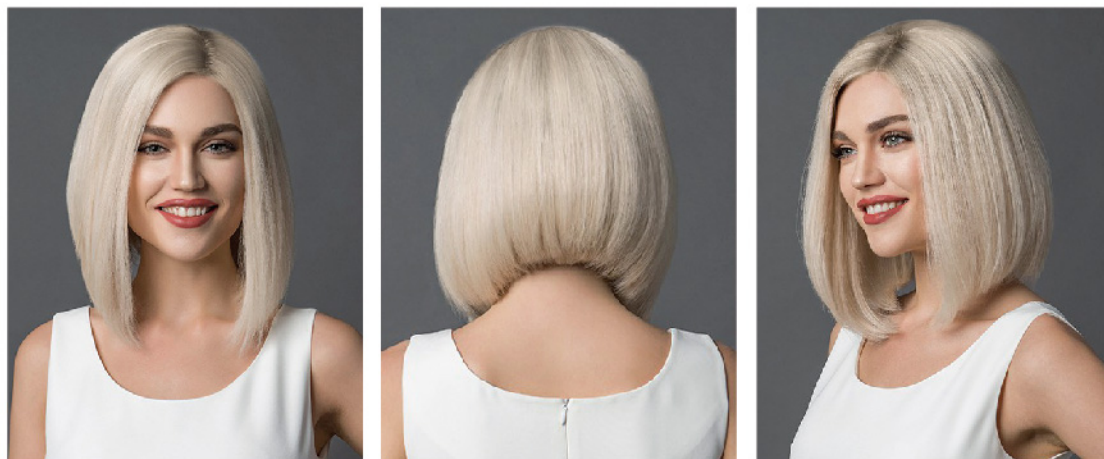
100% Remy Human Hair - Made from high-quality remy human hair, allowing for styling with straighteners, curling irons, and blow dryers.



KIM

CL1911

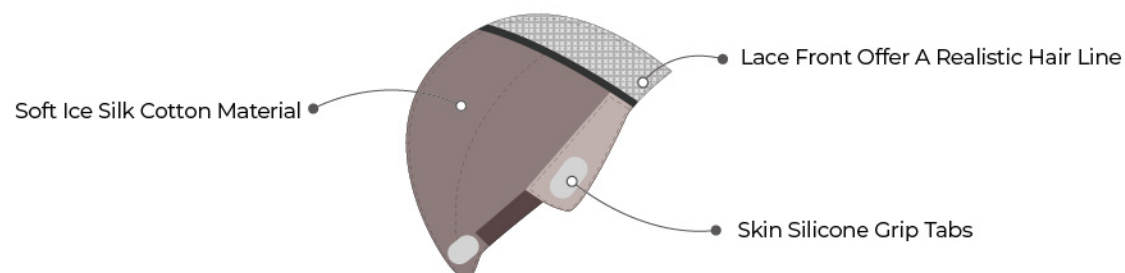
This wig offers a plush inner cap that provides a gentle and comfortable fit for sensitive scalps, eliminating the need for a wig cap underneath. Kim introduces innovative features like skin silicone grip tabs that delicately adhere to the scalp, ensuring a secure fit. The flawlessly pre-cut bob style of Kim showcases longer twelve-inch pieces at the front and shorter nine-inch pieces at the back, creating a chic and versatile look.



Ultra Comfort - The inner cap, made from soft ice silk cotton material, offers a snug fit that makes wearing a wig cap unnecessary. Perfect for sensitive scalps.

100% Hand-tied Lace Top - The 5" x 5" lace top is meticulously hand-tied, providing a natural appearance and comfortable wear.

4 Skin Silicone Grip Tabs - Strategically placed around the cap perimeter, these skin PU tabs prevent wig slippage, serving as an alternative to clips and combs.



TOP COMFORT

HL2201

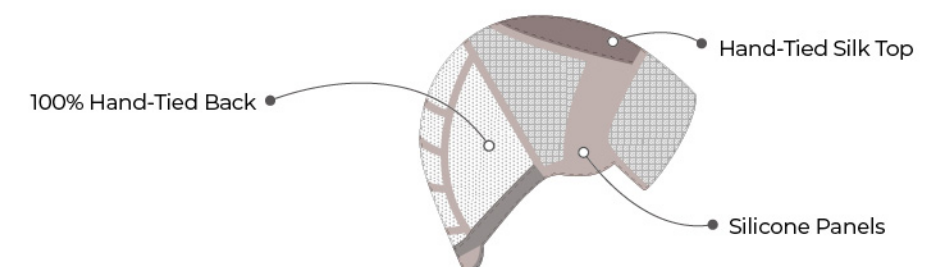
Top Comfort is a silk top human hair wig that is perfect for those with total or partial hair loss such as alopecia. This comfortable wig features a handmade skin top that is breathable and soft on the skin, making this wig great for sensitive scalps. The silk top cap construction provides a clean hair parting and hairline. Ample medical grade silicone panels are placed throughout the cap, including at the front, sides and back to enable a secure hold without any adhesive needed.



Hand-Tied Silk Top - No dark knots and return hair, providing a an ultra-realistic look as if it's your own hair growing from your scalp.

Silicone Panels - Medical grade silicone panels throughout the front back and sides for a secure hold without any adhesive needed.

100% Remy Human Hair - Made from high-quality remy human hair, allowing for styling with straighteners, curling irons, and blow dryers.



EVERYDAY ELEGANCE WIGS

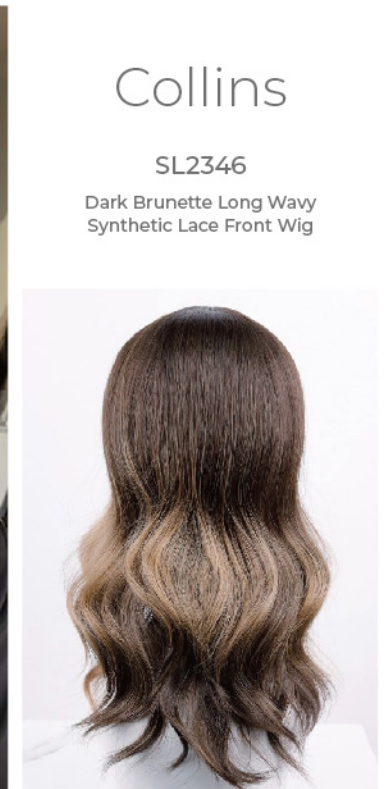
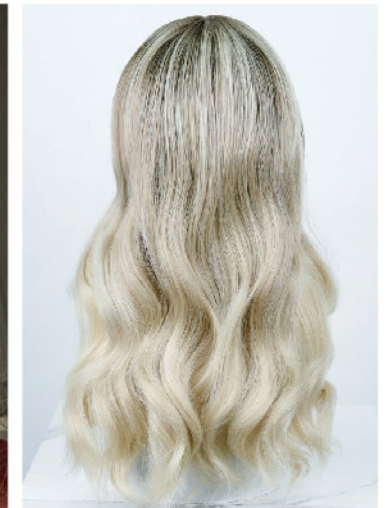
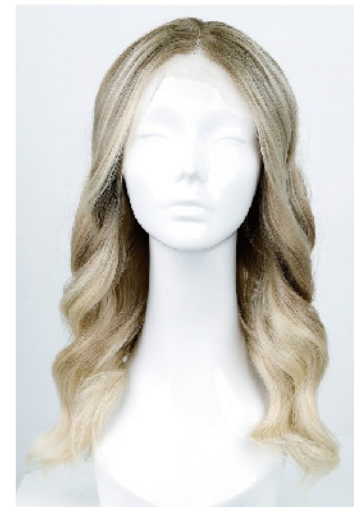
SYNTHETIC WIGS

Our Everyday Elegance Wigs Collection features synthetic wigs that have natural colors and textures to mimic real human hair. They are lightweight with comfort designs, ready to wear out of the box.

Abigail

SL2345

White Blonde Balayage Wavy
Synthetic Lace Front Wig



Collins

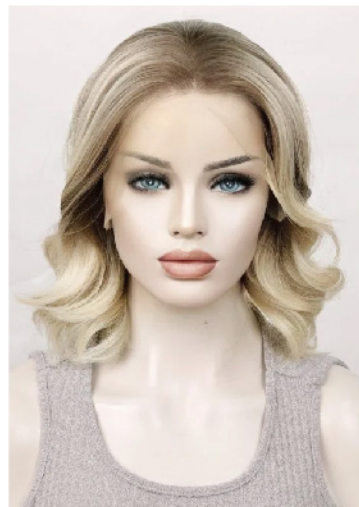
SL2346

Dark Brunette Long Wavy
Synthetic Lace Front Wig

Roxy

SL2335

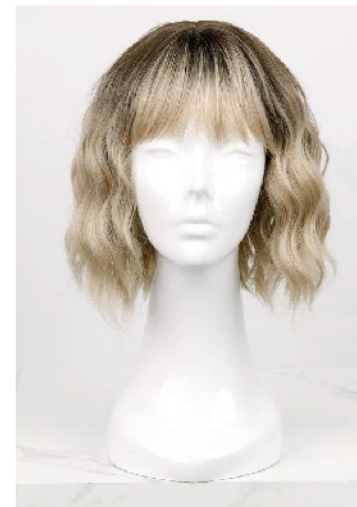
Blonde Wavy Bob Synthetic
Lace Front Wig



Vanilla Latte

SP2329

Baby Blonde Short Wavy Bob
Synthetic Wig With Bangs



CHOCOLATE DREAM

SC2106

Brunette Balayage Wavy
Synthetic Lace Front Wig



Juniper

SP2332

Blonde Shoulder-Length Wavy
Synthetic Wig With Bangs



COLORED GLAMOUR WIGS

SYNTHETIC WIGS

The design philosophy of the Colored Glamour Wigs Collection is that we believe every girl deserves to own a unique wig to show her charm. You can find your dreamy colorful wigs here in different shades like Pink, Blue, Purple, Green, etc.



Rosewood SP2332
Dust Pink Ombre Brown Mid-Length Synthetic Wig



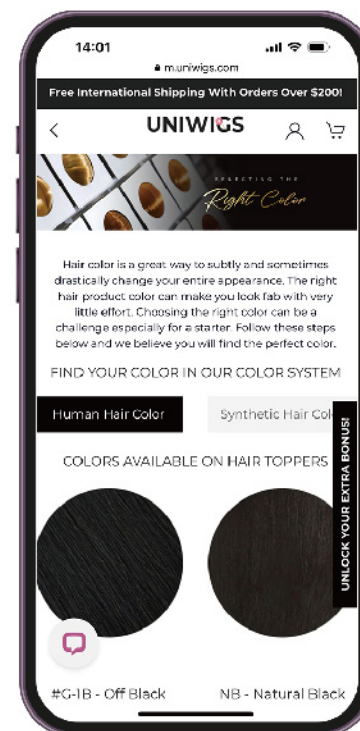
Harley SL0150
Blue/ Pink Bunches Long Wavy Synthetic Lace Front Wig

PERSONALIZED SOLUTIONS

PERSONALIZED SOLUTIONS

At UniWigs, we understand that each person is unique, and their hair solution needs may vary. That's why we offer custom services to ensure the perfect fit and style. Our experienced team is ready to assist you in finding the best hair solution, providing expert advice and customization options to meet your specific requirements.

FIND YOUR PERFECT HAIR COLOR



UniWigs Available Hair Color

<<< Scan the QR Code to Explore
Our Available Hair Color

Purchase a Color Ring

Ideal for frequent users of alternative hair products, purchasing a color ring allows you to explore various colors conveniently. It's an affordable way to find your best match and simplify color changes.

Send Us a Hair Sample

For a flawless match, send us a sample of your hair. Our experienced hair designer will analyze it to find the ideal color for you. We'll get in touch as soon as we receive your sample to discuss the perfect shade.



AVAILABLE BASE TYPE

Glueless Lace Front Cap

100% Hand-Tied Lace Part:

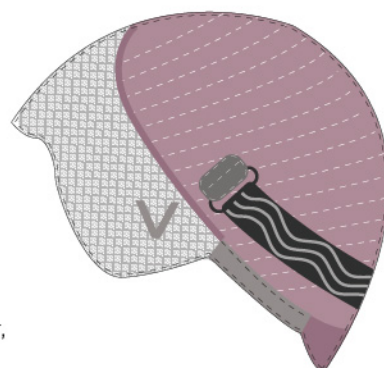
Provides flexible movement and versatility in styling.

Stretching Part :

on crown for a personalized fit.

Glueless Features :

Crafted with adjustable straps, clips, combs, and an ear tab supporter, each wig is a seamless, glue-free experience.



TopComfort Cap

Lace Front:

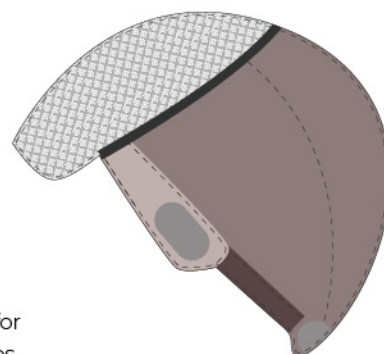
Lace Front offer a realistic hair line

Skin Silicone Tabs:

4 Skin Silicone tabs prevent wig slippage

Topcomfort Cap:

UniWigs Exclusive Cap. Ice silk cotton inner cap eliminates the need for a wig cap, making it extreme comfortable & perfect for sensitive scalps



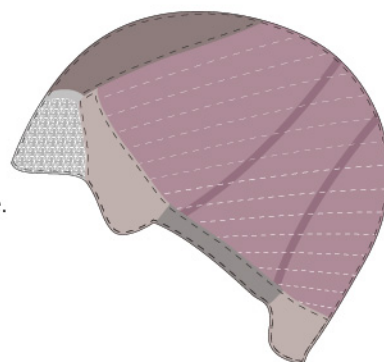
Lace Front & Mono Top Cap

Lace Front:

Mimics a natural hairline, hair is hand tied one by one.

Monofilament Top:

Allows multi-directional parting while providing the appearance of the natural growth.



Find more on our website: uniwigs.com

AVAILABLE BASE TYPE

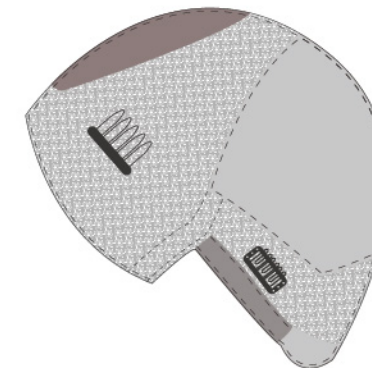
Silk Top Glueless Full Lace Cap

Silk Top:

Hidden knots, allows hair to parted in any directions, and creates the illusion of natural hair growth, provide the most realistic scalp.

Full Lace Cap:

A fully hand-tied lace cap provides a seamless and natural-looking hairline, offering maximum versatility in styling and allowing for realistic hair parting anywhere on the scalp.



Mono Top Cap

Monofilament Top:

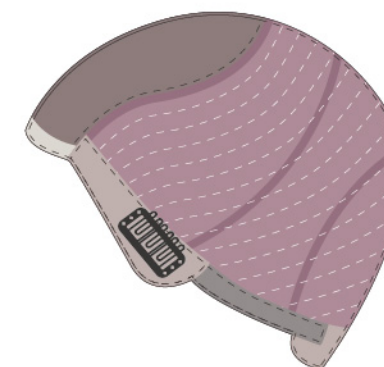
Allows multi-directional parting while providing the appearance of the natural growth.

Machine Wefted Back:

Stretchable, Durable and Breathable.

Adjustable Velcro Straps:

Easily adjusts at the nape.



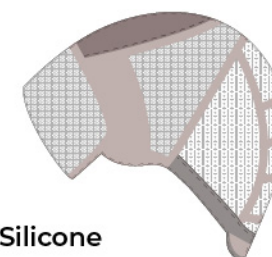
Medical Grade Silicone

Silk Top:

Light and comfortable, helping the scalp stay ventilated. Invisible knotting and no return hair.

Silicone Panels:

Medical grade silicone panels throughout the front back and sides for a secure hold without any adhesive needed.



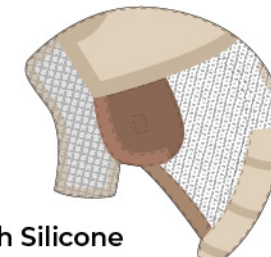
Silk Top Cap With Silicone

Hand-tied Silk Top:

No dark knots and return hair, providing a an ultra-realistic look as if it's your own hair growing from your scalp.

Silicone Ear Tabs:

Medical grade silicone ear tabs are constructed for an added secure fit.



Find more on our website: uniwigs.com



UNIWIGS OFFLINE NETWORKS

Salon Network: Enhancing Convenience and Support

UniWigs has formed strategic partnerships with hundreds of salons, offering customers the ease of face-to-face offline services. Through this salon network, we strive to provide personalized hair solutions while also empowering our salon partners to expand their businesses within the hair industry.





Pop-up Events: Bringing Us Closer to You

Our pop-up events allow us to meet you in person, understand your unique needs, and provide tailored hair solutions. These offline gatherings offer the opportunity to connect, share experiences, and find support within the hair loss community. Together, we strive to empower you with confidence and renewed self-assurance.



UNIWIGS CHARITIES

At UniWigs, we take great pride in our partnerships with charities and our own charitable initiatives. Our commitment to the hair loss community drives us to make a positive difference. We look forward to continuing these efforts, contributing even more in the future.

UniWigs Supports Breastcancer.org



BREASTCANCER • ORG

Breastcancer.org is a non-profit organization that offers vital breast health and cancer information, helping millions make informed choices. Their active support community provides a lifeline for those affected, fostering an inclusive environment of education and assistance.

UniWigs is proud to have raised \$5,000 for Breastcancer.org, and our support for their mission will continue.

UniWigs Supports Breast Cancer Alliance



Breast Cancer Alliance is dedicated to saving lives through research, education, and support. Their mission focuses on improving prevention, early detection, treatment, and quality of life for breast cancer patients.

Since 2014 Breast Cancer Alliance has organized a month-long event called GoForPink. UniWigs donate \$1 from every sale in October to BCA, to raise essential funding for the annual grants and bring important educational and awareness-building opportunities to a national audience.

Kids Wigs Program

Understanding the unique challenges children face when dealing with hair loss, we took action in 2023 by donating three wigs to children in need. As we enter 2024, we remain committed to our cause and are excited to continue our program. The selection process for the next beneficiaries is currently underway. Our mission is to bring joy and confidence to these special children by providing them with quality hair loss solutions.

OUR CUSTOMERS SAY

Since our inception in 2012, the outpouring of customer support and love for UniWigs has been overwhelming. Their trust and loyalty inspire us to continually push the boundaries of innovation, ensuring that we deliver exceptional quality and unparalleled beauty solutions. UniWigs is more than just a brand, it's a community built on empowerment and self-expression.



This is the first wig I've bought that I feel looks natural on me. I usually wear toppers because they seem to look the most realistic on me but I wanted to try something for days that I don't want to bother with trying to blend my biohair with my topper,, and this wig is IT!! I haven't washed her yet but the I'm loving the low density. I wish there were more low density options out there. Highly recommend this wig especially for the price!

Victoria is wearing **Jade** TopComfort CapRemy Human Hair Lace Top Wig.



LOVE this beautiful heat friendly synthetic! The style is gorgeous and the color is so complimentary. I love the shading around the face as it really highlights the dimension in the color of this wig. The hairline is incredibly natural with VERY little work. When I took it out of the package, I ran my airbrush through the roots to give it a bit of extra oomf and then added some face framing layers (as is my preference); but it was very little customization work to make this wig exactly perfect! If you are in the market for a beautiful heat friendly synthetic - this is your girl!

Carlyn is wearing **Abigail** Synthetic Lace Front Wig.



The Collins wig is so beautiful and also affordable! I've worn this for a full day at work with little to no tangles at the nape. I think this wig will be a strong contender in my everyday wigdrobe!

Jennifer is wearing **Collins** Synthetic Lace Front Wig.



Love this wig! It's hard to find nicely colored blonde wigs and I've finally found it! Super comfortable, lightweight, and looks very real and easy to put on. I'm a big fan of uniwigs all my favorite wigs are through them! Also, this is a great price for high-quality and long hair!

Emily is wearing **Carina** Remy Human Hair Wig.



I absolutely love my Charlotte wig! It is light and comfortable and looks very natural! I feel great when I wear it and I've received many compliments already! It is easy to style, as well! I would highly recommend this gorgeous wig!

Laura is wearing **Charlotte** Remy Human Hair Wig.



Years upon years of wearing improperly installed extensions and super tight ponytails finally made my follicles let go and give up. The thing that a lot of people don't know is that alopecia can be permanent and for me it is. The one thing that I have learned regarding beauty and working in the industry for 14 years, however, is that we need to stop letting our flaws define our worth. In today's world, there is a solution or an aesthetic fix for every problem. We don't have to let it consume us. If you have something that bothers you a lot, look to the professionals to help you brainstorm a way to hide or potentially even solve it. We are all beautiful women and we are all in this together helping to lift each other up!

Gabi is wearing **Perfection** Remy Human Hair Lace Wig.

This is my first synthetic wig purchase! The color is absolutely beautiful. I did customize it a bit, shortened it, and thinned it out a tad. The cap is really comfy and the hair is silky. I love that it is heat tolerant.

Patricia is wearing **Blondie** Synthetic Lace Front Wig.

