

UNIWIGS

Find Your Dream Hair



www.uniwigs.com Email: support@uniwigs.com

833-902-4156

2021 Appearanz Inc. all rights reserved. All artwork, images and photography contained in this catalogue including the copyrights herein, are protected by law and may not be copied or reproduced in whole or in part without prior written permission from Appearanz Inc.

CATALOG-HAIR TOPPERS 11/30

TOPPER

ELABORATE
STYLISH
NATURAL

UNIWIGS

“To constantly evolve and deliver care to our customers, so that everyone can achieve the hair of their desires.”

UNIWIGS · SINCE 2012

TABLE of CONTENTS

HAIR TOPPERS

03	04	05	06
PM2303 UPGRADE COURTNEY PS2309 UPGRADE AURA	PS1701 AMBER PS2240 SAVANNAH	PS1702 AMBER PM2217 AIDA	P25001 CLAIRE PM2302 TOP LIGHT

HAIR PATCHES

07	08
CLIP IN HAIR PATCHES	TAPE IN HAIR PATCHES
HG2101 / HG2202 / HG2301 HG2302 / HG2303 / HG2203	PM2306 / PM2307 PS2313 / PS2311

09	10
HAIR TOPPERS FOR PROS	ACCESSORIES
PM2306 / PM2307 PS2313 / PS2311	CC1901/CA2101/CA2102/CA2107 CA2053/CA2304/AC1933/AC2010

11 AVAILABLE COLORS 12 AVAILABLE COLORS

ABOUT UNIWIGS...

UniWigs is a leading hair topper and wig brand since 2012, helping people feel confident and beautiful with our exquisite collection of hair solutions. We offer a variety of options in various colors, styles, and lengths, with customization services to cater to each customer's unique preference. Experience the ultimate hair transformation with UniWigs!





UPGRADE COURTNEY

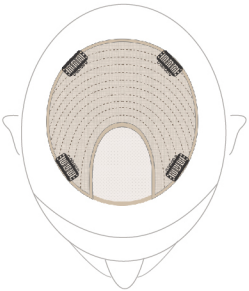
PM2303

Monofilament Top

Hair Lengths: 12" | 14" | 16" | 18" | 20"

Available shades:

G-1B Off Black, Natural Black, 211, 224R, 210, 223R, 01R(Almond Frost), 201R, 624R, 626R



7" x 8"



The 7" x 8" Courtney mono top topper has been meticulously redesigned to meet your styling needs. Its expanded mono hand-tied area ensures a seamless, natural appearance that effortlessly blends with your existing hair. Each hair strand is expertly knotted onto the ultra-thin mono material, creating the illusion of hair growing directly from your scalp.



AMBER

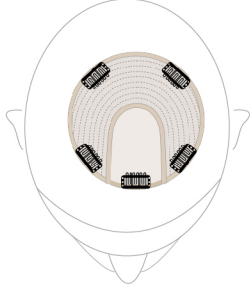
PS1701

Silk Top

Hair Lengths: 12" | 16" | 18"

Available shades:

G-1B Off Black, Natural Black, 211, 210, 223R, 626R



6" x 6"



The 6"x6" Amber topper is a clip in hair topper that adds seamless volume and coverage on the top of the head and along the part. It features silk top which makes the knots 100% invisible and gives the illusion that the hair is actually growing out of your scalp. It is made of 100% human hair and can be heat-styled with a flat iron or curling iron with your hair creating the perfect integration.



UPGRADE AURA

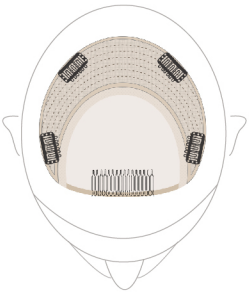
PS2309

Skin Top

Hair Lengths: 12" | 14" | 18"

Available shades:

G-1B Off Black, Natural Black, 211 Espresso brown, 210 Truffle Brown



7.5" x 7.5"



Introducing the enhanced edition of our Aura skin part hair topper: the Upgrade Aura Skin Top! The key advancement in the upgraded Aura hair topper lies in its expanded skin area, offering a larger surface that mirrors the natural appearance of the scalp on the top of your head. This upgraded version also features the flexibility to adjust the part to your preference.

03
HAIR TOPPER



SAVANNAH

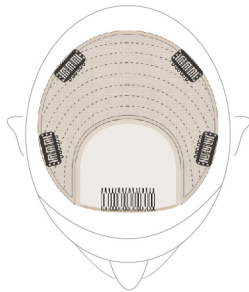
PS2240

Silk Top

Hair Lengths: 14" | 16"

Available shades:

G-1B Off Black, Natural Black, 211, 210, 223R, 201R, 626R



9" x 9"



The Savannah is a human hair topper with a large 9" x 9" base. Savannah is designed to add gorgeous volume and coverage to the top & crown to blend with your own hair for an extremely natural look. You can create beautiful, loose curls hanging down from your shoulders. Come in pre-cut face-framing layers, Savannah makes such a difference between a fine hairstyle and your best hairstyle yet.

04
HAIR TOPPER



AMBER

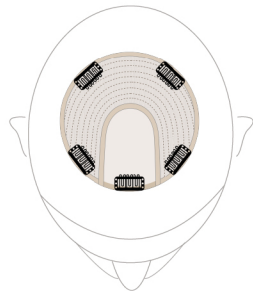
PS1702

Silk Top

Hair Lengths: 12" | 16" | 18"

Available shades:

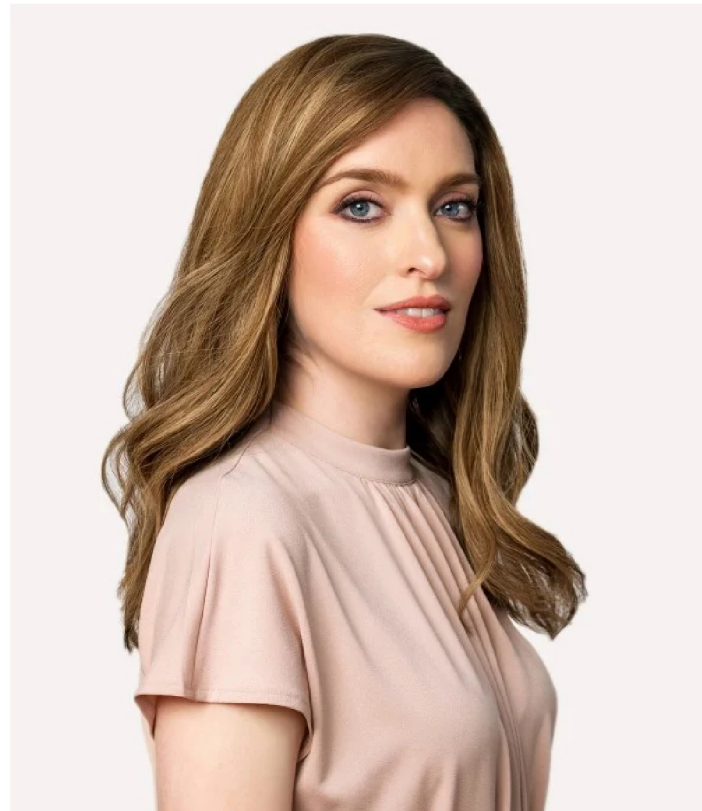
G-1B Off Black, Natural Black, 211, 210, 223R,
01R (Almond Frost), 201R, 626R, 24-613R



6" x 6"



The 6"x6" Amber topper with bangs is a clip in hair topper that adds seamless volume and coverage on the top of the head and along the parting. It has bangs, which help you to avoid the concern of an unnatural hair line. It also features a silk top which makes the knots 100% invisible and gives the illusion that the hair is actually growing out from your scalp.



CLAIRE

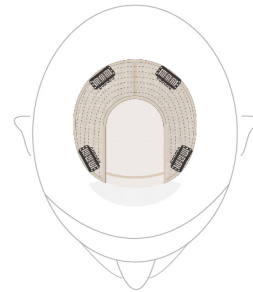
P25001

Monofilament Top

Hair Lengths: 12" | 16"

Available shades:

G-1B Off Black, Natural Black, 211, 210, 223R,
624R, 626R



5.5" x 5.5"



The 6"x6" Amber topper is a clip in hair topper that adds seamless volume and coverage on the top of the head and along the part. It features silk top which makes the knots 100% invisible and gives the illusion that the hair is actually growing out of your scalp. It is made of 100% human hair and can be heat-styled with a flat iron or curling iron with your hair creating the perfect integration.



AIDA

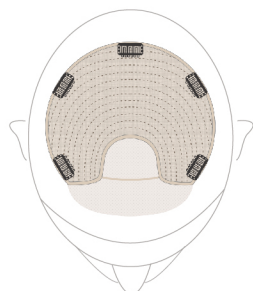
PM2217

Monofilament Top

Hair Lengths: 12" | 16"

Available shades:

G-1B Off Black, Natural Black, 211, 210,
223R, 24-613R



8.5" x 9"



Introducing the enhanced edition of our Aura skin part hair topper: the Upgrade Aura Skin Top! The key advancement in the upgraded Aura hair topper lies in its expanded skin area, offering a larger surface that mirrors the natural appearance of the scalp on the top of your head. This upgraded version also features the flexibility to adjust the part to your preference.

05
HAIR TOPPER



TOP LIGHT

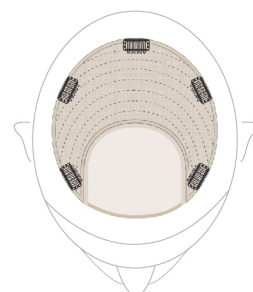
PM2302

Monofilament Top

Hair Lengths: 12"

Available shades:

02 Natural Black, 04 (Medium Brown), G-246,
06 (Light Brown), H10R



8.5" x 9"



Our Top Light topper features a mono top design that ensures a natural and realistic appearance. The mono top construction provides the look of natural hair growth and offers great versatility in styling. This topper is meticulously layered starting from 8" to blend seamlessly with your existing hair, providing added length and volume.

06
HAIR TOPPER

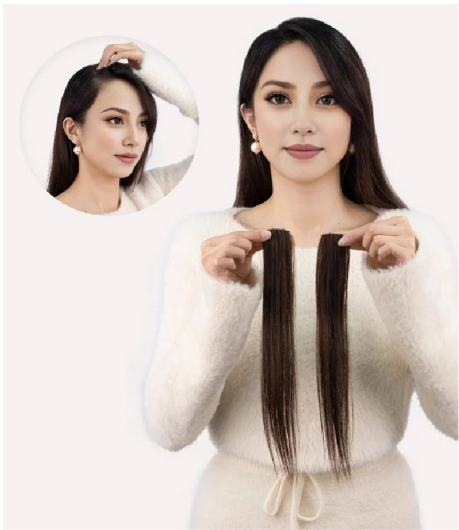
HAIR PATCHES

UniWigs Invisible Cover-up Hair Patch is the perfect solution for patchy spots and small bald areas. It effectively adds volume and seamlessly covers up these areas. Designed to provide a natural-looking and easy-to-use solution, this collection is specifically developed for individuals experiencing hair loss. With UniWigs Invisible Cover-up Hair Patch, you can confidently address your hair concerns and enjoy a more complete and voluminous hairstyle.

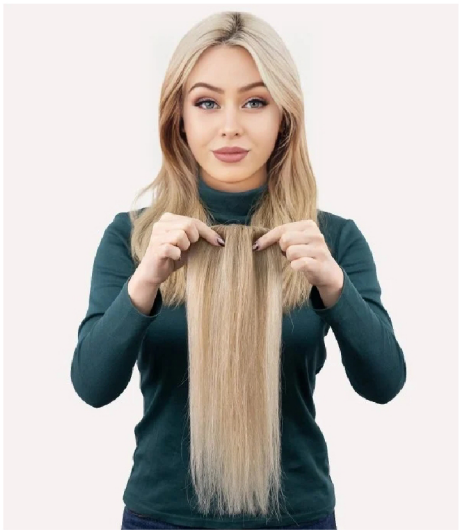
CLIP IN HAIR PATCHES



10" Instant Clip In Human Hair Curtain Bang | No Track Cover-Up Hair Patch | Two Pieces



14" Instant Clip In Human Hair No Track Cover-Up Hair Patch | Hair Volumizer | Two Pieces



2" X 3" Lina No Track Frontals Clip-In Hair Volumizer Hair Patch | 12"



2" X 3" Lina No Track Frontals Clip-In Hair Volumizer | Hair Patch | 14"



18" Instant Clip In Human Hair No Track Cover-Up Hair Patch | Hair Volumizer | Two Pieces



2" X 3" Lina No Track Frontals Clip-In Hair Volumizer | Hair Patch | 18"

TAPE IN HAIR PATCHES



3"X 3" Full Skin Base Human Hair Patch Kit With Tapes



0.75" X 6.25" Skin Base Front Hairline Human Hair Patches | 10"



0.75" X 3" Skin Base Front Hairline Human Hair Patches | 10"



1.5" X 11" Full Lace Hand-Tied Front Hairline Human Hair Patch | 10" | Hair Pieces

HAIR TOPPERS FOR PROS



LILLIE

3"X 3" Full Skin Base Human Hair Patch
Kit With Tapes



DREW

5.75" X 2.75" Drew Full Mono Hand-Tied
Human Hair Topper



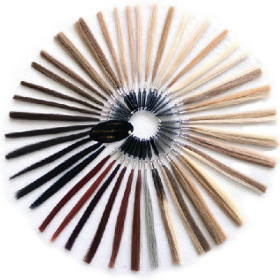
KERI

6.5" X 5.5" Keri Full Mono Hand-Tied
Human Hair Topper



PLATINUM BLONDE

6" X 6" Platinum Blonde Silk Top Human
Hair Topper | Color Me



CC1901
Color Chart- Human
Hair Color Ring



CA2101
MUST-HAVE
Scalp-looking
Part Line Silicone Tape



CA2102
Get Rid Of Flat
Roots| Velcro
Hair-lifting Gripper



CA2107
Hair velcro grippers for
topper security



CA2053
Hairline Concealing
And Teasing Brush



CA2304
Adjustable Halo Wire For
Securing Hair Toppers

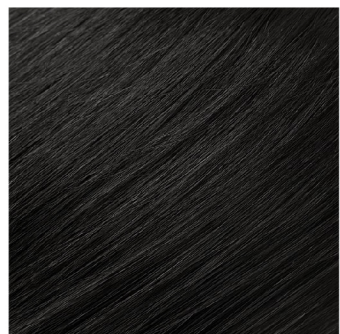


AC1933
Adhesive No-Shine
Tape In Roll Bonding
Tape 3 Yards 36 Pcs

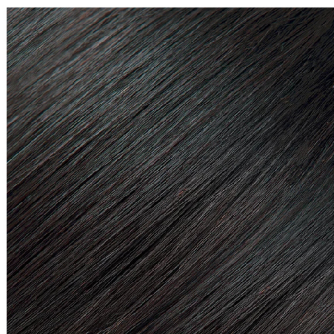


AC2010
0.5oz Ultra Hold Glue
Brush-On Ship To
The U.S. ONLY

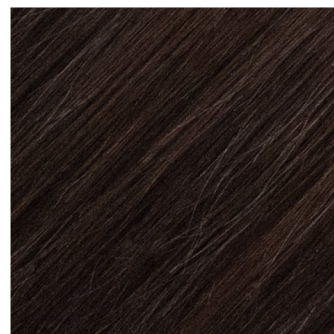
AVAILABLE COLORS



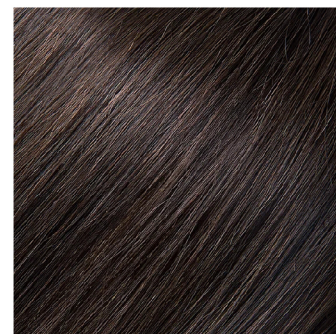
G-1B - Off Black



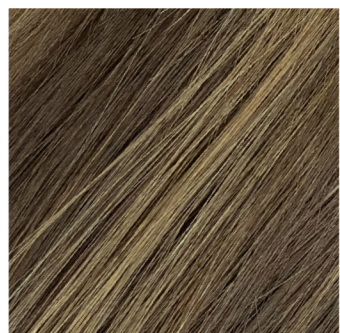
NB - Natural Black



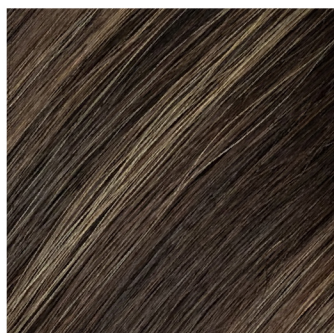
211 - Espresso brown



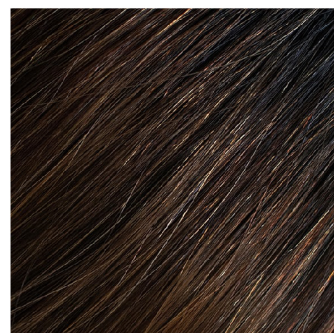
210 - Truffle Brown



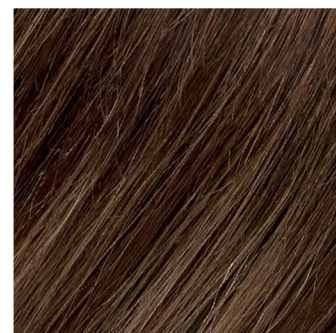
223R - Mousse Brown
with darker roots



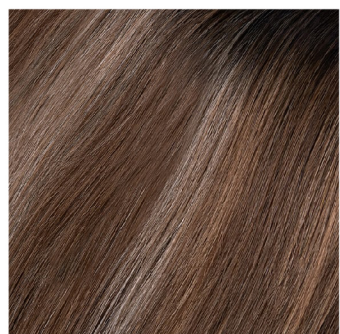
224R - Dark Caramel



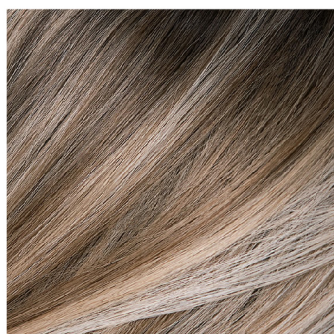
T1B-246 - Chocolate
Brown



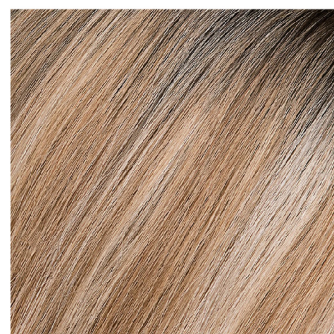
T-414 - Rooted Mocha



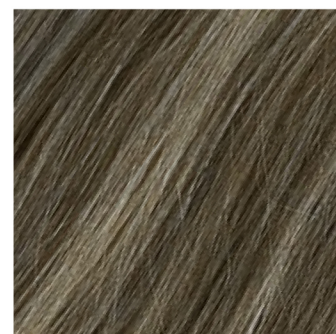
16R - Chocolate Caramel



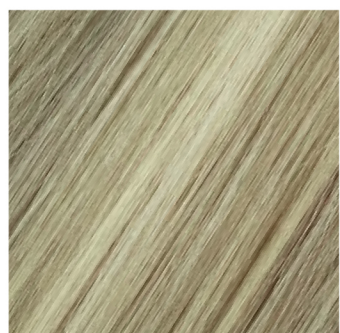
201R - Permafrost



01R - Almond Frost



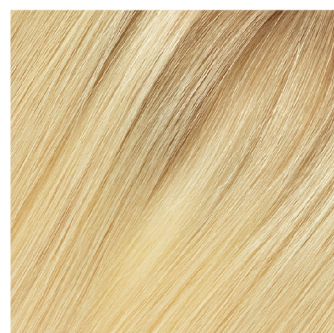
624R - Dusty Ash
Brown



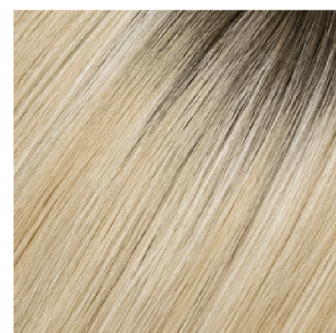
626R - Vanilla Butter
Blonde



705 Silver Grey



8T25



H10R Creamy Ice

AVAILABLE COLORS



672R Light Permafrost



660R Cali Blonde



674R Icy Blonde Melt



24-613R- Summer
Shandy With Ashy Roots



G-613 - Platinum
Blonde